

JUST A GENTLE TOUCH...



REMOTE CONTROL



SILENT TOUCH

OFFICE AUTOMATION



HOTEL AUTOMATION



HOME AUTOMATION



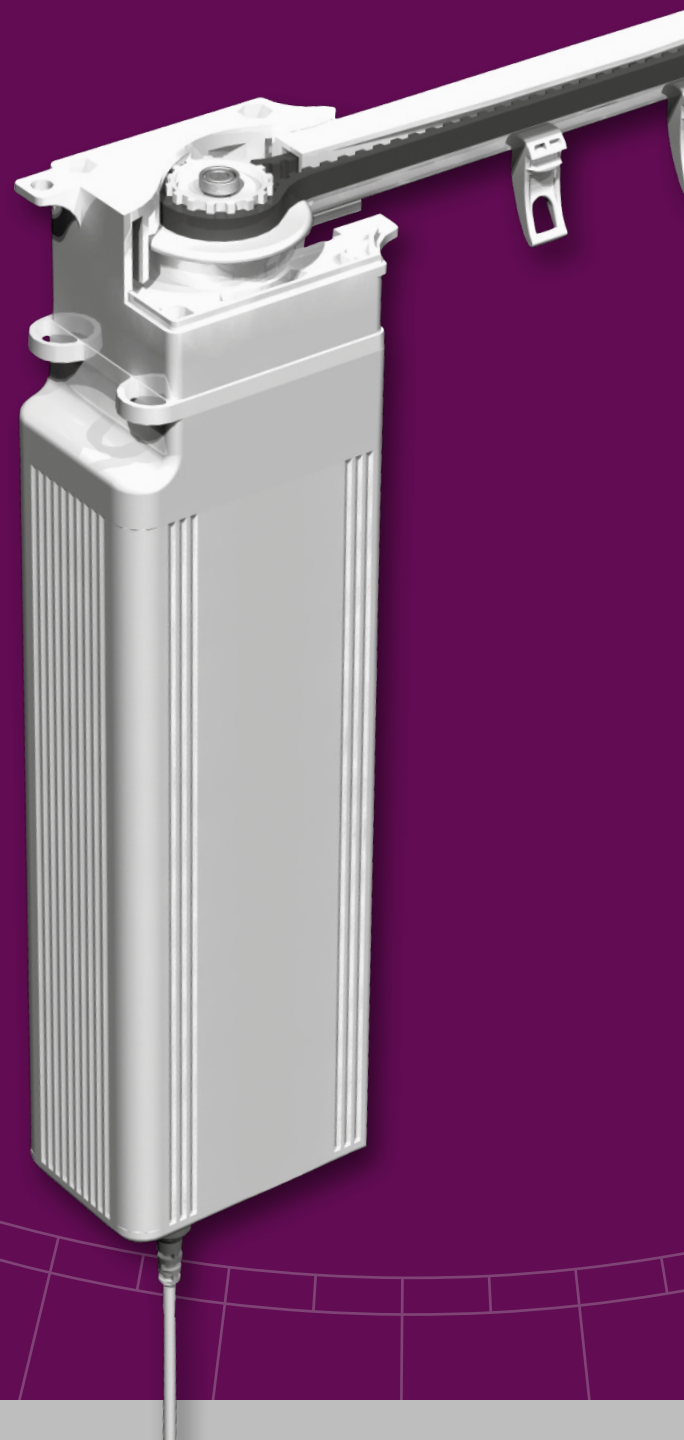
PRODUCT INFORMATION

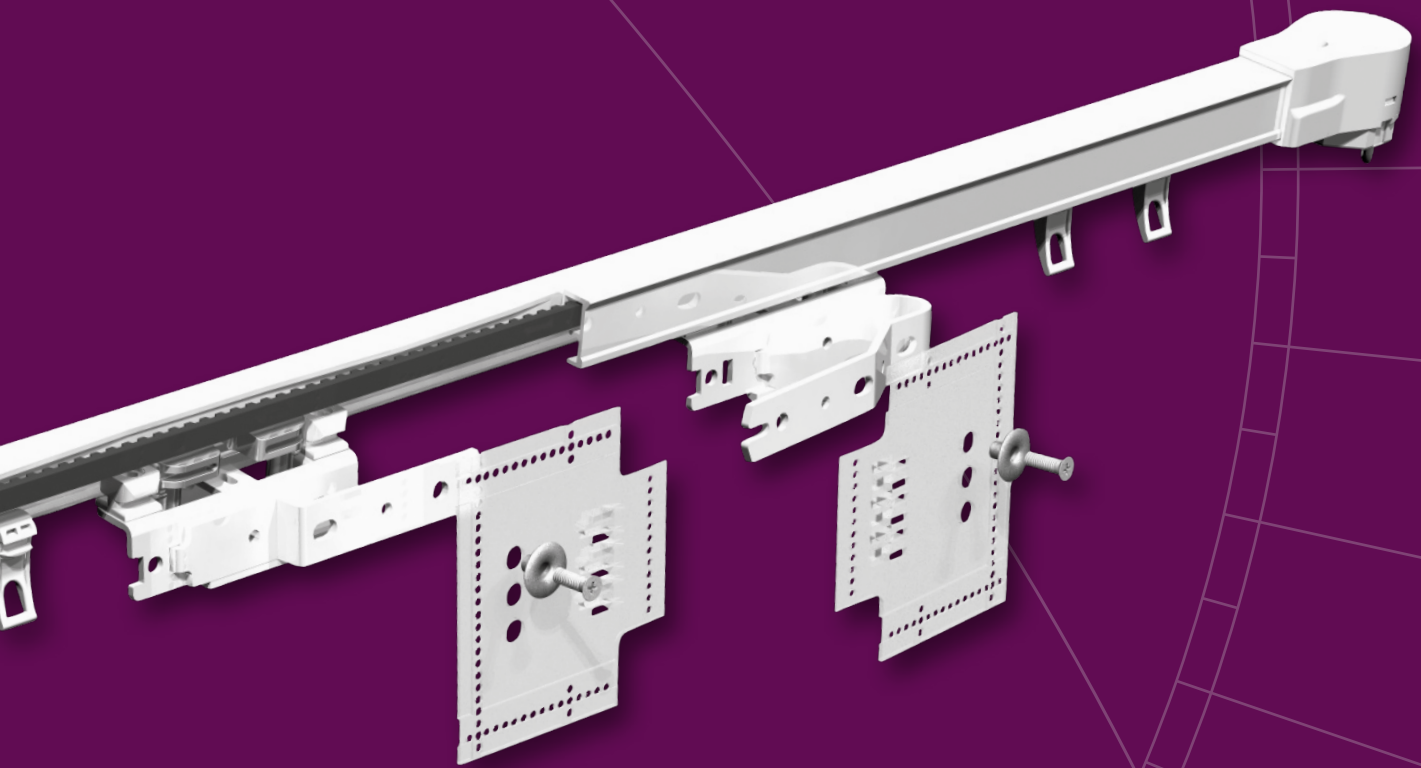
The Forest Shuttle motorized system is available in three types, Shuttle M, Shuttle L and Shuttle S. All three motors offer these functions:

- Touch Impulse Technology, gently pulling the curtain by hand will activate the motor (standard feature);
- Integrated Emergency Control with automatic de-clutch in case of power failure, to ensure a manual operation of the curtains (standard feature);
- Modular motor, different modules can be attached for various control options: Radio Frequency, Wall Switch, Infrared, Domotics, Building/Hotel Automation, Serial Communication, Z-wave, etc.;
- Ultra Silent motor;
- Slow start and slow stop;
- Full automatic setting of the limits;
- Programming of intermediate positions possible;
- Touch Impulse Sensitivity adjustable; high sensitivity, low sensitivity, and off;
- Stack-back position programmable to every desired setting;
- FMS track and components available in white and black;
- Clickable off-set carriers for a straight heading of the curtain; rolling carriers and FES Easyfold carriers also available;
- Kevlar based drive belt;
- All KS brackets applicable;
- Motors can also be used on MRS Motorized Rod System;
- Tandem motor application possible as well.



BOTTOM VIEW
FOREST SHUTTLE

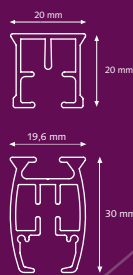




SPECIFICATIONS TRACK

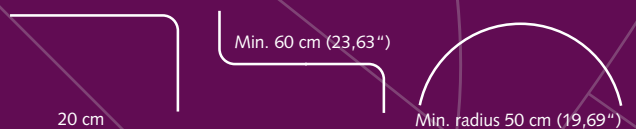
FMS Track: • Weight 303 gr /mtr
(3,25 ounce/ft.)
• Aluminium Extrusion
• Size 20 x 20 mm
(0.8 x 0.8 inch)

FMS Plus: • Weight 500 gr/mtr.
(5,36 ounce/ft.)
• Aluminium Extrusion
• Size 19,6x30 mm
(0.8x1.2 Inch)



BENDING / CURVING

The motor can be used in a track with one or two bends of 90 degrees. The track can be bended and reversed bended with a radius of 20 cm (8"). Continuous curving can be done with the Electric Powered Bender.



CONTROL OPTIONS

BUILDING AUTOMATION



Designed for use in any building automation system through the integrated dry contact port in the motor. 230V direct control is possible with the optional Dry Contact Relay. The BUS ports allow for individual and group controls of the motors.

TOUCH IMPULSE TECHNOLOGY



A gentle pull will activate the curtain thanks to the smart Touch Impulse Technology of the motor. Standard feature.

INTEGRATED EMERGENCY CONTROL



In case of power failure, the curtain can still be moved manually. Standard feature.

MULTI DIAMOND REMOTE CONTROL



Available in white and black, can be used to control all forest motorized window decoration systems. With 6 individually channels or in 1 group.

Z-WAVE DOMOTICA CONTROL



Wireless Domotics communication with data feedback and automatic routing in a mesh-network environment. Open protocol with "Scene Control". Works with the Forest Touch App for IOS and Android devices.

Detailed schedules on how to program the Forest Shuttle are included with the motor and can be found on our website www.forestgroup.com

FOREST PARTNERSHIPS



www.amx.com
In Concert Partner.



www.knx.nl
KNX partner



www.z-wave.com
Z Wave alliance partner



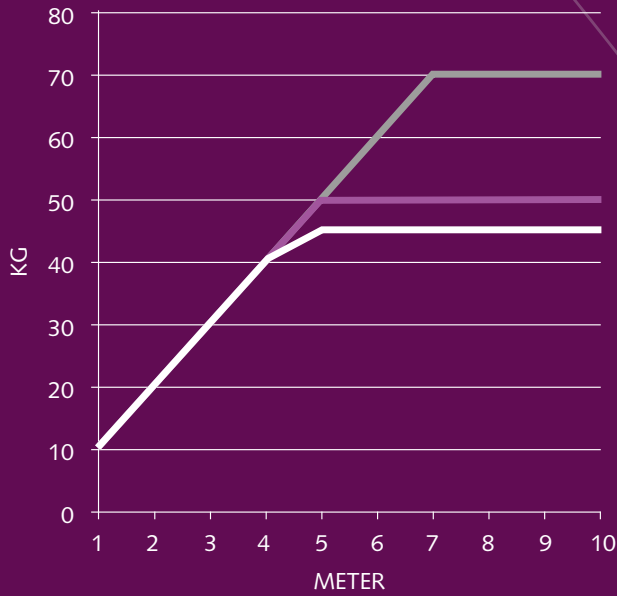
www.crestron.com
I2P partner



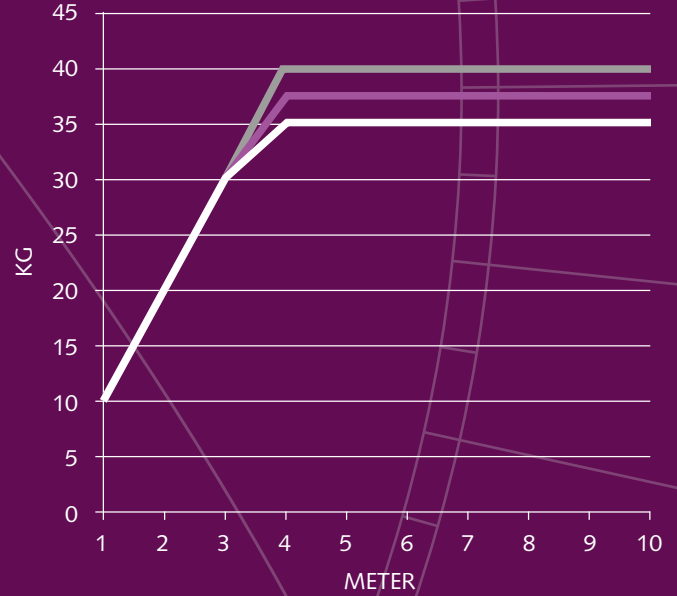
www.smart-homes.nl
Smart homes partner

The Forest[®] Shuttle is compatible with many other Building of Automation systems, thanks to its modular construction. A competitive advantage over the motorized drapery systems in the world!

SHUTTLE M LOAD TABLE:



SHUTTLE S/L LOAD TABLE:



- Straight
- One Bend/Curve
- Two Bends

	Shuttle M	Shuttle S	Shuttle L
Voltage Shuttle	24Vdc	24Vdc	100 - 240V~ 50 - 60Hz
RF Multi Receiver	Internal, optional	Internal	Internal
Power Supply	External, 100-240Vac – 1,5A - 50-60Hz; Output 24Vdc - 2,7A	External, 100 - 240Vac - 0,8A - 50 - 60Hz; Output 24Vdc - 2,5A	Internal
Max. power	65W	40W	40W
Torque:	1,5 Nm	1,0 Nm	1,0 Nm
Speed:	15 cm/s	14 – 17cm/s	14 – 17cm/s
Noise Level:	< 40 dB(A)	< 40 dB(A)	< 40 dB(A)
Max. curtain weight	70 kg	40 kg	40 kg
Dimensions Motor:	7 x 5 x 23 cm	7 x 5 x 20 cm	7 x 5 x 28 cm
Dimensions Power Supply	50 x 110 x 30 mm	50 x 80 x 30 mm	-
Protection degree	IP20	IP20	IP20
Max. running time	175 sec (in one direction)	240 sec (in one direction)	240 sec. (in one direction)
Certification & Marking:	CE/FCC	CE/FCC	CE/FCC

FOREST SHUTTLE 'S' & 'L'

FOREST SHUTTLE 'L' 230 VOLT AC



Motor with internal RF Multi Receiver and integrated 24 V power Supply 110 – 240 V. Touch Impulse and Emergency Control as standard.

Dimensions 7 x 5 x 28 cm 1/box
 White 5232000001
 Black 5232006001
 With Z-wave receiver built-in 5232000002

FOREST SHUTTLE 'S' 24 VOLT DC



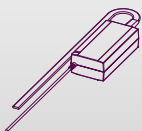
Motor with internal RF Multi Receiver, Touch Impulse and Emergency Control as standard. 24 V Power supply 110 – 240 V to be ordered separately.

Dimensions 7 x 5 x 20 cm

POWER CABLE 4M

EU	white	5201001104
	black	5201006104
UK	White	5201001134
		1/box

FOREST ADAPTOR FOR SHUTTLE 'S'



Forest adaptor with support bracket for Shuttle 'S' motor 1/box

Plugs available in versions: 1/box
 EU 5201001101
 UK 5201001131
 AUS 5201001141
 USA 5201001121

FOREST SHUTTLE 'M'

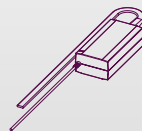
FOREST SHUTTLE MOTOR 24 VOLT DC



Strongest motor with standard Touch Impulse System and Emergency Control and with internal RF Multi Receiver. *Dimensions: 7x5x23 cm (2.76x1.97x9.25")*

1/box
 White 5232000003
 Black 5232006003
 Without receiver built-in:
 White 5231000000
 Black 5231006000

FOREST ADAPTOR



Forest adaptor set complete 1/box

(eu) incl. wall bracket	5201002002
(uk) incl. wall bracket	5201002004
(uk) incl. wall bracket black	5201006002
(usa) incl. wall bracket	5201002005

SHUTTLE MULTI RECEIVER CLICK ON



To be used in case of no built-in receiver and with Diamond remote control. 1/each

SHUTTLE Z-WAVE MODULE



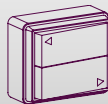
Receiver to be used with a Z-wave remote control. 1/box

FOREST Z-WAVE REMOTE CONTROL



7-channel remote control with scene setting options. 5201001700 1/box

FOREST PULSE WALL SWITCH



Dimensions: 6,5 x 5,5 x 2,7 cm (2.56 x 2.17 x 1.06") 5201001900 1/box

MULTI DIAMOND REMOTE CONTROL



5 + 1 channel remote control. 1/each
 White 5201091460
 Black 5201096460

MULTI WIRELESS WALL SWITCH



2-channel wall switch. 1/each
Dimension: 8,5 x 8,5 x 1 cm.
 White 5201001480
 Black 5201006480

FOREST MULTI WIRELESS SWITCH WITH TIMER



15 channels 1/each
 White 5201001481
 Black 5201006481

SHUTTLE INFRARED MODULE



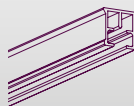
Cordlength is 60cm. 5201001260 1/box

SHUTTLE INFRARED REMOTE CONTROL



6 channel infrared remote control. 5201001250 1/box

FMS TRACK



Aluminium extrusion, powder coated black, lubricated. Available 10/bundle
 lengths: 5,80 m (19') 5101001580
 7 m (23') 5101001700
 7 m (23'), black 5101006700
 7 m (23'), silver 5101003700

FMS CARRIER



"Klickable", offset, made of UV-resistant plastic. 250/box
 10 Carriers on a break-away strip, can be clicked into the track after installation. White 2510101000
 Black 2510106000
 Silver 2510103000

FMS/CCS/MRS WHEEL CARRIER



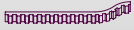
The wheel carrier goes smoothly over a splice. 5210101002 100/box

FMS TRACK JOINER



Used to make a solid connection between two pieces of track. 10/box
White 2518401000
Black 2518406000
Silver 2518403000

FMS TRANSPORT BELT



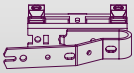
Toothed belt, to be installed inside the FMS Track. 5105501000
100 mtr/roll

FMS MASTER CARRIER UNDERLAP



Multifunctional - arm is reversible for Click on stiffner 15/box
White 5215801010
Black 5215806010
Silver 5215803010

FMS MASTER CARRIER OVERLAP



Multifunctional - arm is reversible for Click on stiffner 15/box
White 5215901010
Black 5215906010
Silver 5215903010

UNDERLAP SINGLE R/L

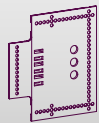


Multifunctional - arm is reversible - will slide trough curves. 15/box
White 3016001000
Black 3016006000

PROLONGED OVERLAP CLICK ON

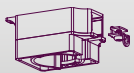
15 cm long. 15/box
White 95000001010
Black 95000006010

CLICK ON STIFFNER



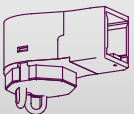
Recommended to attach to the FMS Master Carriers, stiffner to be stitched into the curtain. 5116001001
15/box

FMS MOTOR PULLEY



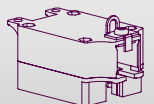
Connects motor with FMS Track. 1/box
White 5103011000
Black 5103016000
Silver 5103013000

FMS RETURN PULLEY



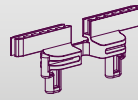
Reverses the FMS transport belt in the FMS Track. 1/box
White 5103011100
Black 5103016100
Silver 5103013100

FMS MOTOR PULLEY UPSIDE DOWN



Can be used to place the motor upside down on the FMS track. 5103011003
1/box

FMS CONNECTOR



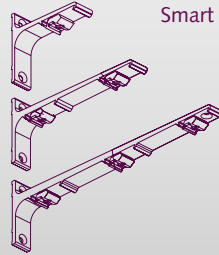
To fix the FMS Master Carrier onto the FMS transport belt. 50/box
White 5103011500
Black 5103016500
Silver 5103013500

SMART KLICK CEILING BRACKET



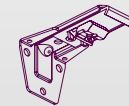
"Klicks" onto track, powder coated. 100/box
White 1018201000
Included Cover Cap 1018201001
Black 1018206000
Silver 1018203000

ALUMINIUM WALL BRACKET



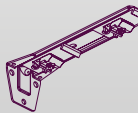
Smart Klick, powder coated. 1020301...
7,5 cm single (3") 20/box
10 cm single (4") 20/box
15 cm double (6") 15/box
20 cm double (8") 15/box
25 cm triple (10") 10/box
Colours: 01, 03, 06.

ADJUSTABLE WALL BRACKET SINGLE



Smart Klick, adjustable single 1020801115
from 7,5 cm (3") to 100/box
11,5 cm (4,5").

ADJUSTABLE WALL BRACKET DOUBLE



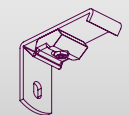
Smart Klick, adjustable double 1020801195
from 6,5 cm (2,5") to 50/box
10 cm (4") + 15 cm (6") to
19,5 cm (7,5").

FSS METAL BRACKET



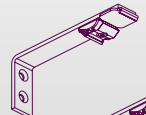
Strong bracket to fit the Forest Skylight System to the wall or ceiling. 7160001000
100/box

SMART KLICK WALL BRACKET

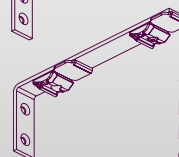


3,5 cm (1,4") and 6 cm 50/box
(2,4"). "Klicks" onto track, 10202...035
powder coated. One screw attachment. For light weight use only. Colours: 01, 03, 06. 10202...060

SMART KLICK WALL BRACKET



"Klicks" onto track. 10202... mm
10 cm (4"), 12,5 cm (5"), 20/box
15 cm (6"), 20 cm (8"), 15/box
25 cm (10") and 30 cm (12") 10/box
with support.



15 cm (6"), 20 cm (8")
Double track. 10206... mm
For light weight use only. 15/box
Colours: 01, 03, 06.

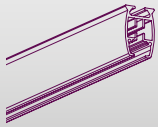
FOREST LUBRICANT



To lubricate components during assembly. 1/box
5109010000

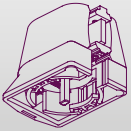
FMS PLUS

FMS PLUS TRACK



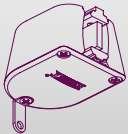
Aluminium extrusion 5/bundle
Available length : 7 m (23')
White 5131001700
Black 5131006700

FMS PLUS MOTOR PULLEY



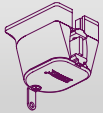
Connects motor with FMS PLUS track 1/box
White 5133011000
Black 5133016000

FMS PLUS RETURN PULLEY



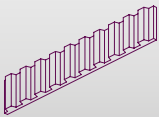
Reverses the FMS Plus belt in the FMS Plus track 1/box
White 5133011100
Black 5133016100

FMS PLUS MOTOR PULLEY UPSIDE DOWN



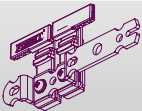
Can be used to place the motor upside down 1/box
White 5133011003

FMS PLUS TRANSPORT BELT



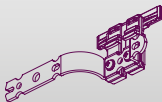
Toothed belt to be installed inside FMS Plus track 100 mtr/roll
5135501000

FMS PLUS MASTER CARRIER UNDERLAP



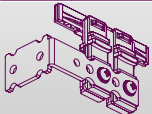
Arm is reversible 10/box
White 5135801000
Black 5135806000

FMS PLUS MASTER CARRIER OVERLAP



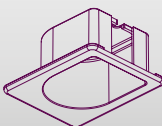
Arm is reversible 10/box
White 5135901000
Black 5135906000

FMS PLUS MASTER CARRIER EASY FLEX L&R



White 10/box
5135901010

FMS PLUS RECESS COVERPLATE



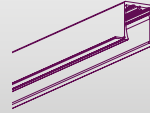
Coverplate for recess; motor and return pulley 1/box
White 5133011104

FMS PLUS RECESS COVERPLATE UPSIDE DOWN



Coverplate for recess; motor pulley 1/box
White 5133011004

FMS PLUS RECESS PROFILE



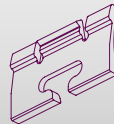
Pre-drilled 7 mtr (23')
Combine with fixing strip
White 5002001701

FMS PLUS RECESS PROFILE FIXING STRIP



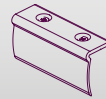
Combine with profile 6 mtr (20')
White 5131001600

FMS PLUS PROFILE WEDGE



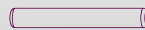
To fix the track into the profile 10/box
5131001100

FMS PLUS / MTS TRACK BRIDGE



To join two pieces of track; 10/box
6,5 cm White 4518701000
28 cm White 4518601000

FMS PLUS / KS TRACK CONNECTORPIN



Stainless steel, 2 x 20 mm 50/box
For a firm seamless connection 9900000012

CONTRACT BENDING TOOL



For CS/CCS/FMS/CRS/MTS 1/each
2560000000

CS/CCS/FMS Bending Wheel 1/each
2561000000

FMS PLUS BENDING SET

For use together with bending tool. Including strips. 1/each
5131000000

FOREST
— DRAPERY HARDWARE —

